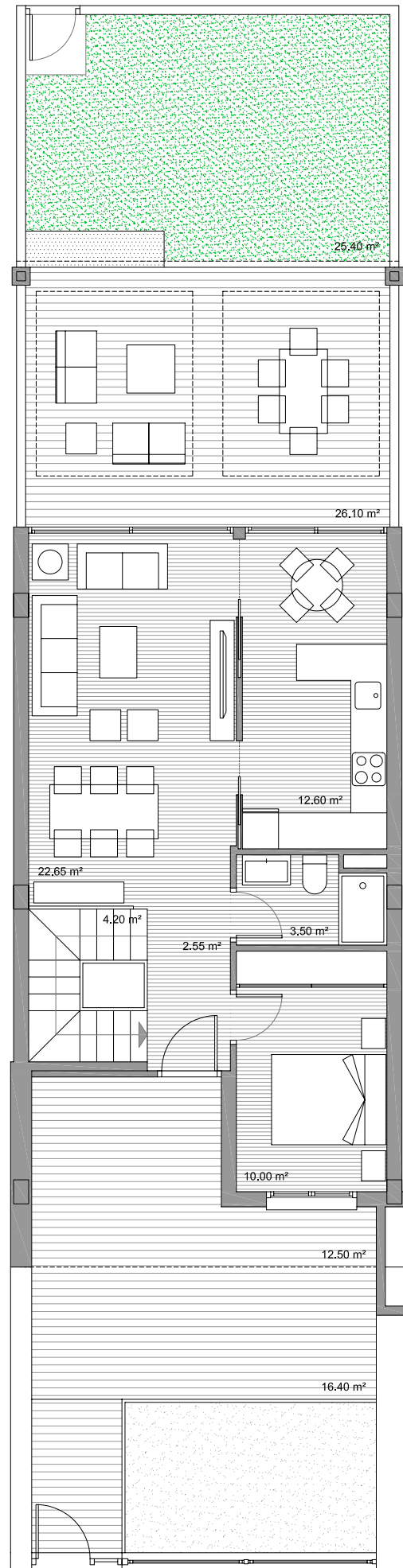
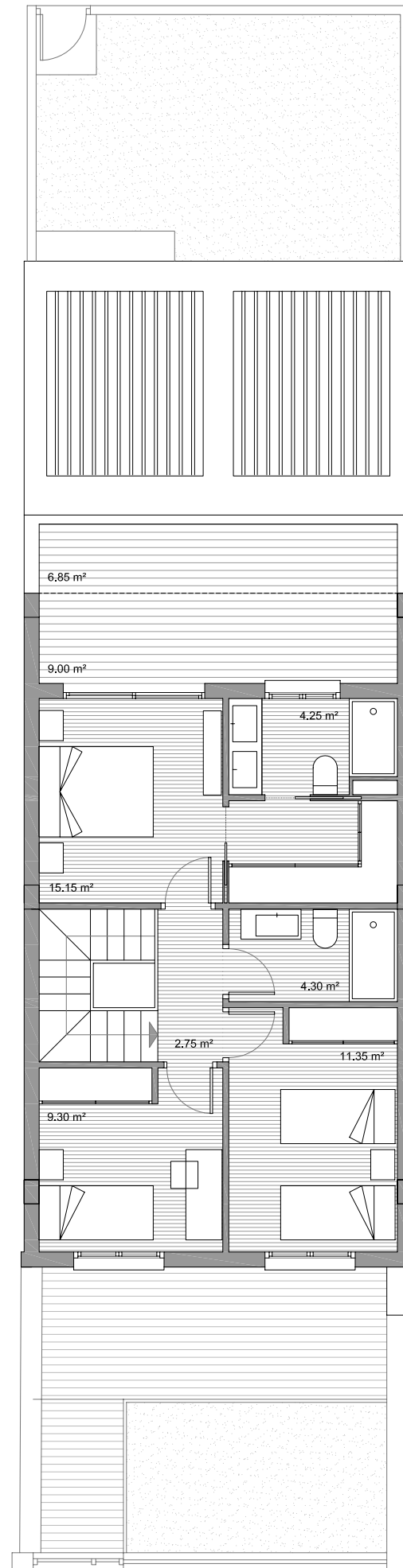


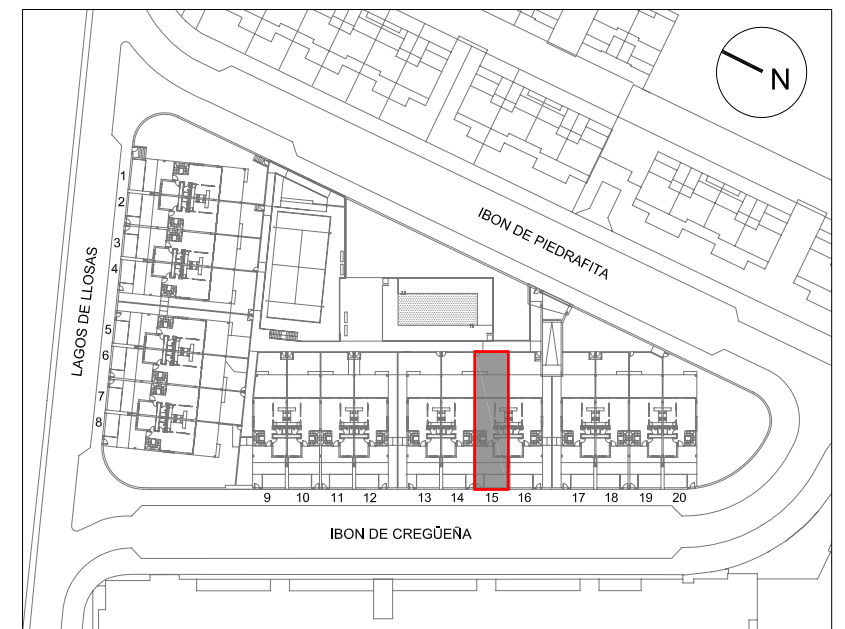
PLANTA SÓTANO



PLANTA BAJA



PLANTA PRIMERA



VIVIENDA 15

SUPERFICIES

SUPERFICIE ÚTIL INTERIOR	148,50 m2
SUPERFICIE ÚTIL EXTERIOR	110,95 m2
SUPERFICIE ÚTIL TOTAL	293,40 m2

junio 2018



escala 1.100